

DD DICOM CD Station Quick start Guide



Data Distributing
Service. Storage. Valued Relationships.



OPERATING PROCEDURES

A. Introduction

The following sections provide step-by-step instructions for performing the most common DD DICOM CD Workstation operations associated with media creation. Due to the configurable, modular nature of the workstation, these are generic instructions; various steps might not apply to your specific configuration. These instructions are not the only way to accomplish the selected tasks. However, they provide a complete, logical, and sequential method covering the entire process from startup through media creation.

- Startup.
- Rimage Unit Start-up
- Login.
- Find Local Images.
- Find Remote Images.
- Select Images.
- View Images.
- Add Images to Storage Set.
- Cut CD.

B. Startup

The DD DICOM CD Workstation should be started in the prescribed sequence to ensure proper operation.

Step	Action	Result
1.	Verify the following: <ul style="list-style-type: none">• Rimage Unit OFF.• Computer OFF• Monitor OFF.• SCSI cable connected between Media Writer and computer with a terminator.• Monitor connected.• Network cable connected.• Surge protector connected.• UPS connected.	The DD DICOM CD Workstation is ready to startup.
2.	Apply power to the Rimage unit	The power light is ON. Status indicators on the Rimage Unit flash and mechanisms cycle. After a brief delay, Power On Self Testing completes. The device indicates ready for use.
3.	Apply power to the Monitor.	The power light is ON.



Step	Action	Result
4.	Apply power to the Computer.	The power light is ON. Status indicators on the front panel flash, internal cooling fans hum, and internal hard drives “spin up.” After a brief delay, Power On Self Testing completes and the box “beeps”. The monitor displays various status indications. After a brief wait, the operating system login screen appears.

C. Rimage Media Writer Start-up

NOTE

The Rimage Media Writer must start and successfully complete self-tests before applying power to the DD Dicom CD Workstation. The DD DICOM CD Workstation **cannot** establish communications with the Rimage Media Writer until self-tests successfully complete. Starting the workstation before successfully completing Rimage self-tests requires workstation and Rimage unit shutdown and restart in the correct sequence.

This Appendix describes a generic startup sequence associated with a correctly configured DD DICOM CD Workstation. While this simplified description is neither complete nor completely accurate, it provides a general description of the background processes necessary to properly launch the CD *PowerPACS* application. This description is provided only for general information and basic reference. Recall that all required hardware and software items are properly loaded and configured at Data Distributing before the DD DICOM CD Workstation leaves the installation floor, and that these items should not be altered without express permission from the Data Distributing technical staff.

As previously indicated, the DD DICOM CD Workstation contains a Rimage media-writing device. When this is an external device, this unit must be turned ON (power applied) *before* applying power to the Computer. In addition, this device and its associated drivers must successfully load before the CD *PowerPACS* software application launches. In general, the following sequence must successfully complete before the CD *PowerPACS* software correctly operates:

- External Rimage Media-Writing Device ON.
- Workstation ON.
- Operating System Loads.
- Operating System Login.
- Desktop Appears.
- Rimage Media Writing Software Loads.
- CD *PowerPACS* Software Loads.

D. Rimage External Media-Writing Device ON

Because of protocols used and the resulting interactions between hardware devices, the Rimage external media-writing device must be on before the DD DICOM CD Workstation receives power. In general, the Rimage media device should finish its POST (Power On Self Test) routines *before*



the DD Dicom CD Workstation receives power. Any error indicators (i.e., flashing warning lights) should be investigated and resolved prior to powering the DD DICOM CD Workstation.

E. Workstation ON

The DD DICOM CD Workstation computer and monitor receive power and startup, as would any computer. The normal sequence is to start the monitor, then start the workstation. Various text messages and graphics appear during the startup sequence. These indicate the hardware and software devices currently being loaded by the operating system.

F. Operating System Loading, Login, and Desktop

The DD DICOM CD workstation operating system (OS) continues to load after the SCSI controller loads. The load sequence pauses when the login screen appears. The OS prompts the user to enter a name and password. After validating these, the sequence continues and the desktop appears.

G. Media Writing Software

After the desktop appears, the OS continues to load software drivers and applications items identified in the Startup Item folder. In this case, the OS loads various software applications used to interface the CD *PowerPACS* application to the Rimage media-writing device, as illustrated in Figure F-1. The CD *PowerPACS* icon at the lower right corner of the illustration launches the CD *PowerPACS* application. The other three icons launch drivers and applications required to automate the media creation process and to control Rimage media-writing devices.

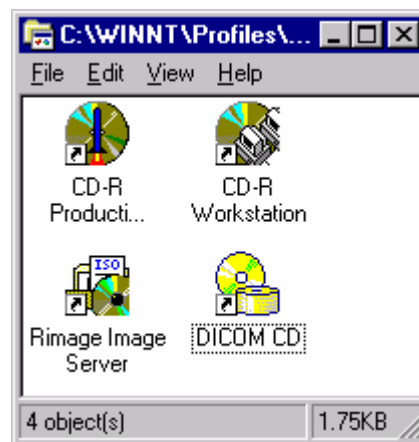


Figure F- 1 Startup Item Icons

The DD Dicom CD workstation loads an application associated with Storage Set creation before loading other background applications. Figure F- 2 represents a typical display associated with this event. This window is normally not seen by operators. Settings available in this window must not be altered without the express permission of Data Distributing technical staff.



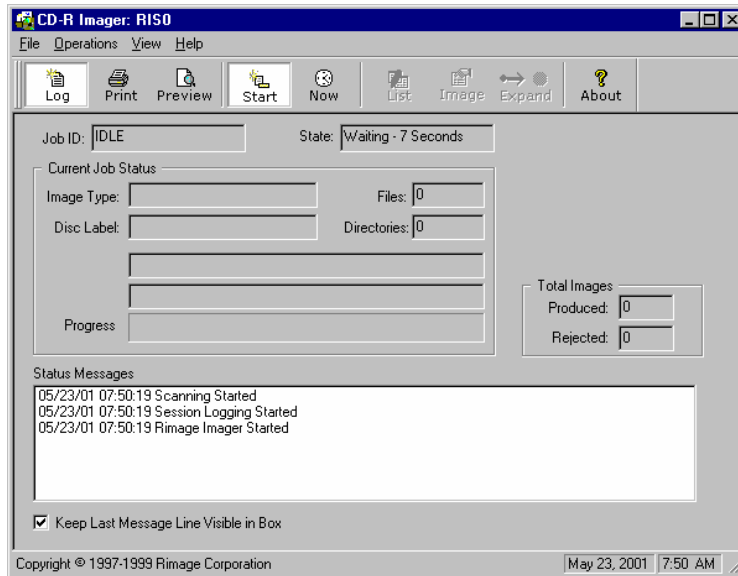


Figure F- 2 Imager Startup Screen 1

The DD DICOM CD workstation also loads software required to control the media-writing device. Figure F- 3 represents a typical display associated with this event. This particular illustration indicates the software searched all communication interfaces for suitable devices. In addition, this display also indicates that there is a dual Rimage media-writing device with a printer (Transport 1).

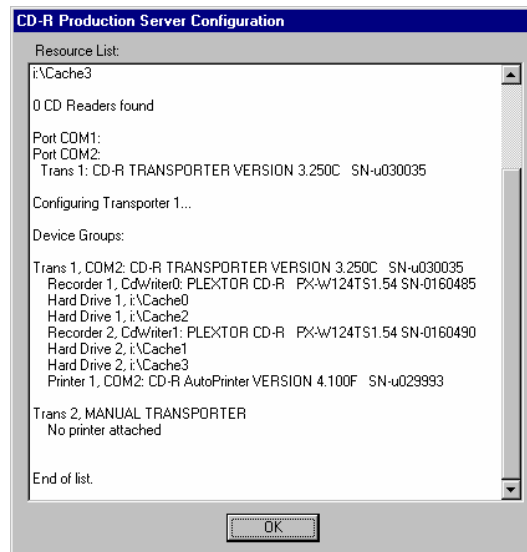


Figure F- 3 Production Server Startup Screen 1

After locating all suitable Rimage media-writing devices, the software controlling the media-writing process provides indication that automated media-writing is available. Figure F- 4 represents a typical display associated with this event. This particular illustration indicates the software has no jobs pending and is awaiting input from the CD *PowerPACS* application. Settings available in this window must not be altered without the express permission of Data Distributing technical staff.



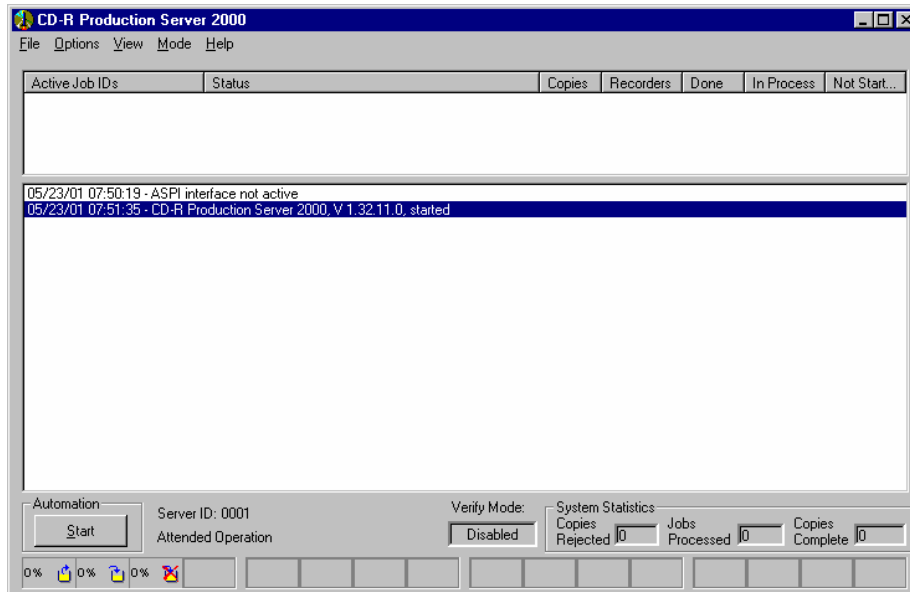


Figure F- 4 Production Server Startup Screen 2

H. CD PowerPACS Software

After all other background drivers, processes, and applications load, the DD DICOM CD workstation loads the CD *PowerPACS* application, as indicated by the presence of the Startup Screen & login Window.

I. CD PowerPacs Login

When the Windows login screen appears, enter login and password information to connect the workstation with the network. If any login errors or status messages appear during startup, do **not** continue until problems are first resolved. From the Windows Login Window:

Step	Action	Result
1.	Select the CD <i>PowerPACS</i> User Name field.	A cursor appears in the CD <i>PowerPACS</i> User Name field.
2.	Enter the case-sensitive User Name.	Clear text appears in the User Name field as text is entered.
3.	Select the CD <i>PowerPACS</i> Password field.	A cursor appears in the CD <i>PowerPACS</i> Password field.
4.	Enter the case-sensitive Password.	Encrypted text (a series of asterisks) appears in the Password field as text is entered.
5.	Locate and select the Login button.	The CD <i>PowerPACS</i> application launches and the RADinfo Systems CD <i>PowerPACS</i> window opens.



J. Find Local Images

Images previously sent or automatically uploaded to the local hard drive from another DICOM workstation appear in the **DICOM Image List** area, under the **Local Storage** icon. However, the image on the monitor only updates upon operator command. Thus, images stored on the local hard drive might not appear under the **Local Storage** icon if they were sent after the last update. Perform the following to search for images on the local hard drive.

Step	Action	Result
1.	From the RADInfo Systems CD <i>PowerPACS</i> Main Screen, left-click to select (highlight) the Local Storage icon.	The area surrounding the Local Storage icon turns blue to indicate selection.
2.	Rapidly double-click the Local Storage icon.	CD <i>PowerPACS</i> scans the local hard drive and automatically updates the list of images in the local data base. After a brief delay, the List Tree in the DICOM Image List window refreshes to indicate all Studies, Series, and Images currently on the local hard drive.
3.	If necessary, shorten the list of images by selecting the Query Button at the lower left corner of the window. -or- Highlight the Local Storage icon by left-clicking on it. Once highlighted, then right-click on it to open a tracking menu. Left-click on the Query Local Images menu item.	The Query Window appears.
4.	Left-click and select the appropriate storage device under the Resource heading.	A drop down list appears, indicating all authorized storage devices. Scroll until Local Storage appears. Select (highlight) Local Storage .
5.	Determine which field will be used to query (filter) the data. Click in the button to the left of the name of the sort field.	The button changes. Unselected fields contain empty circles. Selected fields contain a bullet inside. The query fields are mutually exclusive; only one may be selected at a time. The title of the text entry heading changes to reflect the query filter selection.
6.	Left-click and select the text entry field.	A cursor appears text entry field.
7.	Enter sort/query data.	Text appears as typed.



Step	Action	Result
8.	Select the Query Button.	CD <i>PowerPACS</i> queries the Local Storage and returns a list of Studies, Series, Images matching criteria.
9.	If any Patient node in the tree control is not expanded, left-click on it to select it, then double click on it.	The application will query for study, series and image information for this patient, and adds it to the patient node

K. Find Remote Images

CD *PowerPACS* attempts to locate images on remote workstations according to pre-configured schedules. Because of refresh constraints, the identities of Studies, Series, and Images existing at remote workstations may not have been transferred to the CD *PowerPACS*. In such cases, it is necessary to update (refresh) the remote workstation name list. Perform the following to search for images on remote workstations.

Step	Action	Result
1.	From the RADinfo Systems CD <i>PowerPACS</i> Main Screen, left click to select (highlight) a Remote Workstation icon.	The area surrounding the Remote Workstation icon turns blue to indicate selection.
2.	Rapidly double-click the Remote Workstation icon.	CD <i>PowerPACS</i> queries the remote workstation automatically updates (refreshes) the list of images in the local data base. After a brief delay, the List Tree in the Remote Workstation window refreshes to indicate all Studies, Series, and Images currently on the remote hard drive.
3.	If necessary, shorten the list of images by selecting the Query Button at the lower left corner of the window. -or- Highlight the Local Storage icon by left-clicking on it. Once highlighted, then right-click on it to open a tracking menu. Left-click on the Query Local Images menu item.	The Query Window appears.
4.	Left-click and select the appropriate storage device under the Resource heading.	A drop down list appears, indicating all authorized storage devices. Scroll until the desired Remote Workstation appears. Select (highlight) the desired Remote Workstation .



Step	Action	Result
5.	Determine which field will be used to query (filter) the data. Click in the button to the left of the name of the sort field.	The button changes. Unselected fields contain empty circles. Selected fields contain a bullet inside. The query fields are mutually exclusive; only one may be selected at a time. The title of the text entry heading changes to reflect the query filter selection.
6.	Left-click and select the text entry field.	A cursor appears text entry field.
7.	Enter sort/query data.	Text appears as typed.
8.	Select the Query Button.	CD <i>PowerPACS</i> queries the Remote Workstation and returns a list of Studies, Series, Images matching criteria.
9.	If any Patient node in the tree control is not expanded, left-click on it to select it, then double click on it.	The application will query for study, series and image information for this patient, and adds it to the patient node

L. Select Images From Detailed Image List

Image selection occurs after locating an image according to Storage Device, Patient Name, Series, and Individual Image. Perform the following to select an image or a set of images.

Step	Action	Result
1.	Scroll through the DICOM Image List Window or the Detailed Image List Window and locate the desired image(s).	~
2.	To select a single image, left-click the indicated image.	A single line (row) highlights.
3.	To select a range of adjacent images, left-click an item at either end of the range. Hold the Shift key and left-click the item at the end of the range.	A consecutive block of images highlight. The first and last items selected form the boundaries of the range.
4.	To select a range of non-adjacent images, left-click an item. Hold the Ctrl key and left-click the next desired item. Repeat the process until all desired items are selected.	A non-consecutive sequence of images highlight.



M. View Images

Clicking the **Display** Button at the bottom of the main window invokes the **Image Information** Window. All selected images appear in this window.

N. Add Images to Media

To add the selected images from the Detailed Image List to the **Images to be copied to CD** window, click the **Add to CD** Button at the bottom of the main window, or drag the selected images to the **Images to be copied to CD** window with the right button.

To add images directly from a node in the **DICOM Image List** tree to the **Images to be copied to CD** window, highlight an appropriate node with left button. Then drag it with the right button to the **Images to be copied to CD** window.

O. Cut CD

Clicking the **Cut CD** Button at the bottom of the main window begins the media writing process. All images in the storage set are processed. The **CD Task Dialog** window provides status of operations in progress.

